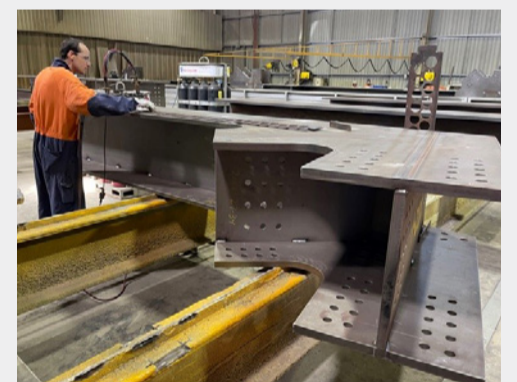
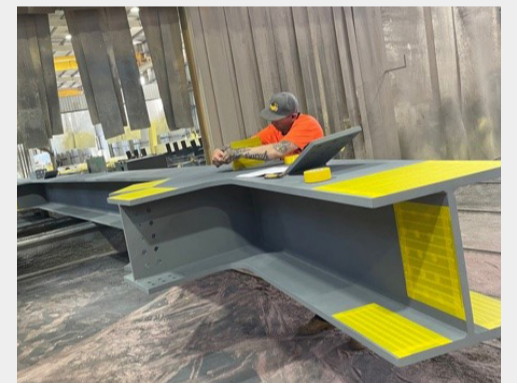


# Eumemmerring Rail Bridge



## PROJECT OVERVIEW

We recently completed a Rail Bridge for a valued client as part of the Level Crossing Removal Project. This project weighed in at 340T and spanned 64m.

Our scope included workshop detailing, all beams, splice plates, restraints, all structural fasteners, non-destructive testing, trail assembly, surface protection & transport to site.

The bridge was fabricated in individual beam sections before being trial fit and sent to the site. An innovative new design was used on the bridge to protect the existing environment.

To achieve this feat there were over 11,600 bolts used in the construction of the project. Once assembled that bridge was launched over the creek as a single assembly using a launching platform. This was a slow process moving at ~8m per hour.

A fantastic note is that this project was complete using 100% local steel. Which are a testament to our local manufacturing industry and a great incentive by the Victorian Government.

## PROJECT SPECIFICATION

Client	Level Crossing Removal Project (LXRP)/Western Program Alliance (WPA)
Location:	Eumemmerring Creek, Victoria
Year	2021
Dimensions	64m (W) x 11m (H) x 7m (W)
Material	Low Temp Carbon Steel (Up to 400 Grade)
Weight	340T

**thornton**  
*Depend on it*

## Project Enquiries

David Thornton +61 (0) 3 5274 3180  
sales@thorntoneng.com.au

visit [thorntoneng.com.au](http://thorntoneng.com.au)

370 Bacchus Marsh Road  
Corio 3214, Vic Australia