

Rosala Avenue Pedestrian Bridge



PROJECT OVERVIEW

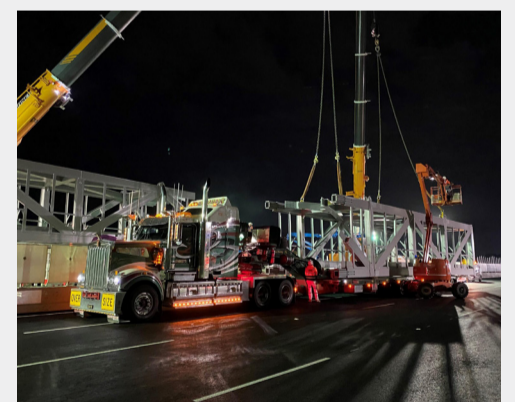
We fabricated a pedestrian bridge for the West Gate Tunnel Project, part of an upgrade to the pedestrian and cycling network that connects the suburbs of Melbourne. The 130 tonne bridge incorporated plate steel box sections and was manufactured to the highest quality standards.

Our scope of work included:

- Detailed design
- Material supply
- Fabrication
- Non-destructive testing (NDT)
- Blast and paint
- Transportation to site

PROJECT SPECIFICATION

Year	2020
Location	Altona, Victoria
Material	Carbon Steel
Plate Thickness	Up to 42mm
Weight	~130T



thornton
Depend on it

Project Enquiries

David Thornton +61 (0) 3 5274 3180
sales@thorntoneng.com.au

visit thorntoneng.com.au

370 Bacchus Marsh Road
Corio 3214, Vic Australia