

CAPABILITY OVERVIEW

# Plate Fabrication

**thornton**  
*Depend on it*

**Project Enquiries**

+61 (0) 3 5274 3180  
[sales@thorntoneng.com.au](mailto:sales@thorntoneng.com.au)  
[www.thorntoneng.com.au](http://www.thorntoneng.com.au)

# OUR CAPABILITY

Our Plate Shop provides us with the opportunity to offer clients heavy plate fabrication and full modular assemblies. We offer our clients the flexibility for complete offsite or onsite assembly.

## WORKSHOPS

- ✓ 315m long x 32m wide
- ✓ 14m under hook
- ✓ 2 x 16T cranes
- ✓ 4 x 32T + 32T cranes (64T dual lift)
- ✓ 256T total lifting capacity
- ✓ Dedicated plate storage and processing workshop feeding multiple fabrication workshops

## EQUIPMENT

- ✓ CNC sawing, drilling & stamping
- ✓ Plasma cutting, drilling & stamping
- ✓ Plate & beam blasting
- ✓ 2 x 25m x 4.2m plate cutting machines
- ✓ Welding (GTAW, FCAW, GMAW & SMAW)
- ✓ Robotic welding
- ✓ Submerged arc (SAW) with twin tandem capability

## PRODUCTS & SERVICES

- ✓ Gantries
- ✓ Girders
- ✓ Bridges
- ✓ Custom welded beams
- ✓ Custom box sections (RHS/SHS)
- ✓ Chutes/hoppers
- ✓ Frames
- ✓ Galvanising Baths
- ✓ Quenching tanks
- ✓ QA points: NDE, traceability



# OUR PROCESS



## Plate Blasting

All Australian hot rolled sections 1.2m wide x 0.6m height



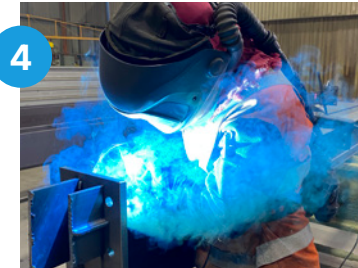
## Kinetic Plate Cutting

2 x 25m x 4.2m Plate Cutting Machines



## Fabrication Lines

195m long x 32m wide Fabrication Shop



## Manual Welding

GTAW, FCAW, GMAW & SMAW



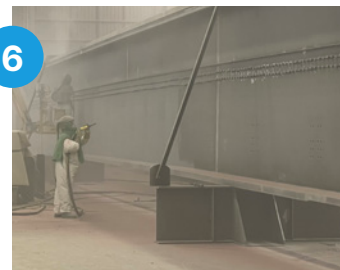
## Product Dispatch

Transportation or pickup from site and ability to offer undercover storage



## Heated Painting

4 x heated painting zones



## Garnet Blasting

2 x blasting zones after fabrication



## Robotic Welding

Twin 6-axis robot arms mounted to 6.5m high gantry on 15m wide x 195m long rails

3

Capability Statement  
Thornton Engineering © 2024

thornton



## LIFTING MAGNET SYSTEM





**PLATE BLASTING**  
3.2m Wide - Class 2.5 or 3





**KINETIC PLATE CUTTING**  
4m x 25m Capacity





**BRIDGE GIRDER  
ROBOTIC WELDING**





## HEATED PAINTING

4 x heated painting zones







**GALVANISING KETTLE**  
CAMPBELLFIELD, VICTORIA



**WESTGATE DISTRIBUTOR BRIDGE**  
MELBOURNE, VICTORIA





**EXTENSIVE STORAGE  
INTERNAL & EXTERNAL**





**RAIL BRIDGE CROSSING**  
EUMEMMERRING CREEK, VICTORIA





### CHUTE WORK - MINING



### FLARE ENCLOSURE - OIL & GAS

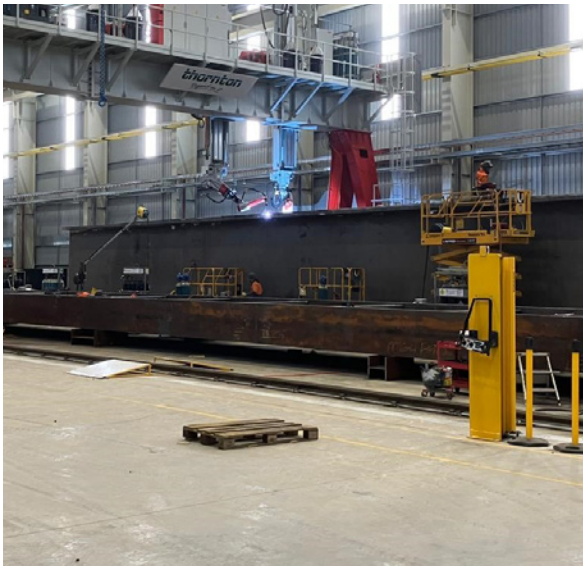


### PENSTOCK - HYDRO





## BRIDGE GIRDERS



## PILING & PIPES



## SIGN GANTRIES





# WHY THORNTON



## 01. Precision Design

Our team can prepare designs to your exact specifications and international design standards.



## 02. Extensive Capability

We leverage our industry leading machinery to produce an extensive range of steel products.



## 03. Proven Performance

We have a reputation for consistently delivering projects at scale, on time and on budget.



## 04. World Class Quality

We operate an advanced quality management system providing you with the quality you demand.



## Project Enquiries

David Thornton +61 (0) 3 5274 3180  
sales@thorntoneng.com.au

visit [thorntoneng.com.au](http://thorntoneng.com.au)

370 Bacchus Marsh Road  
Corio 3214, Vic Australia

